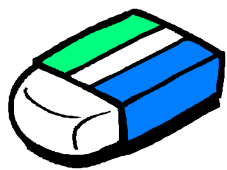


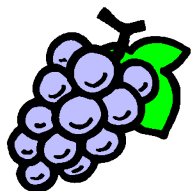
L7

にほんごで なんですか？

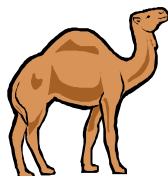
A



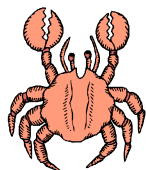
… けしごむ



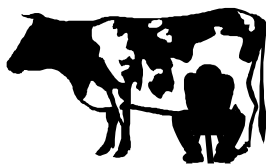
…ぶどう



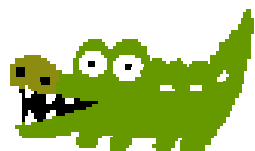
…らくだ



…かに



…うし



…わに

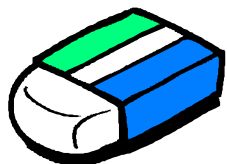


…ペンギン

L7

にほんごで なんですか？

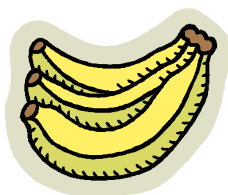
B



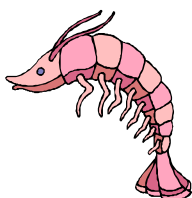
… けしごむ



…たこ



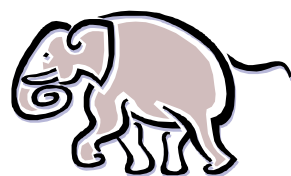
…バナナ



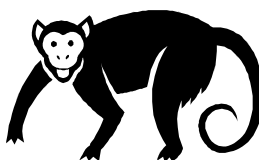
…えび



…いるか

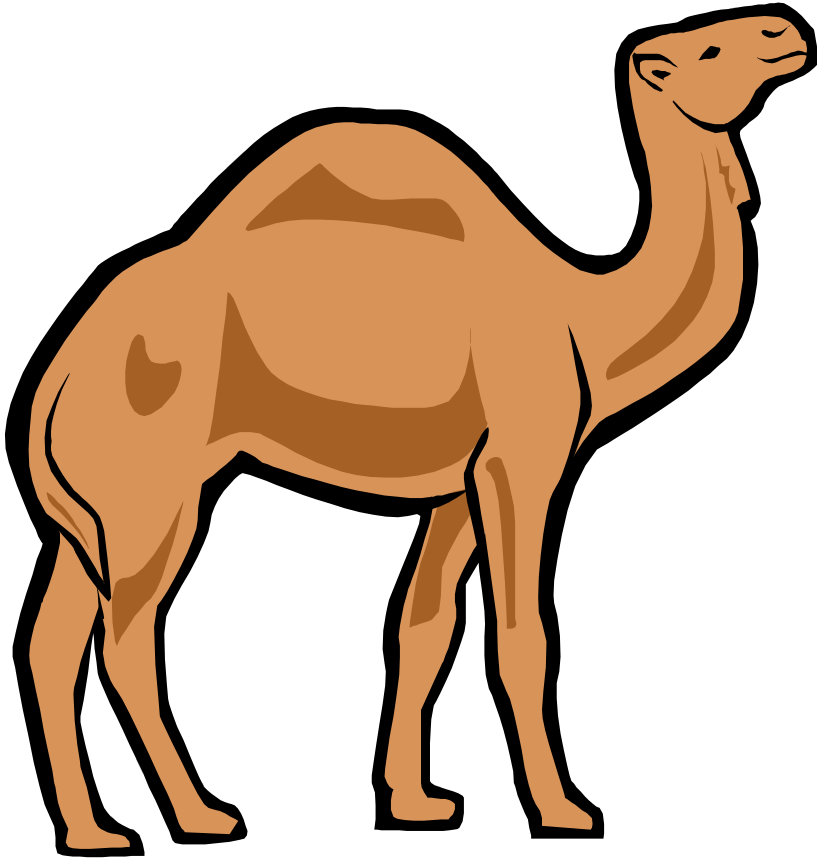


…ぞう



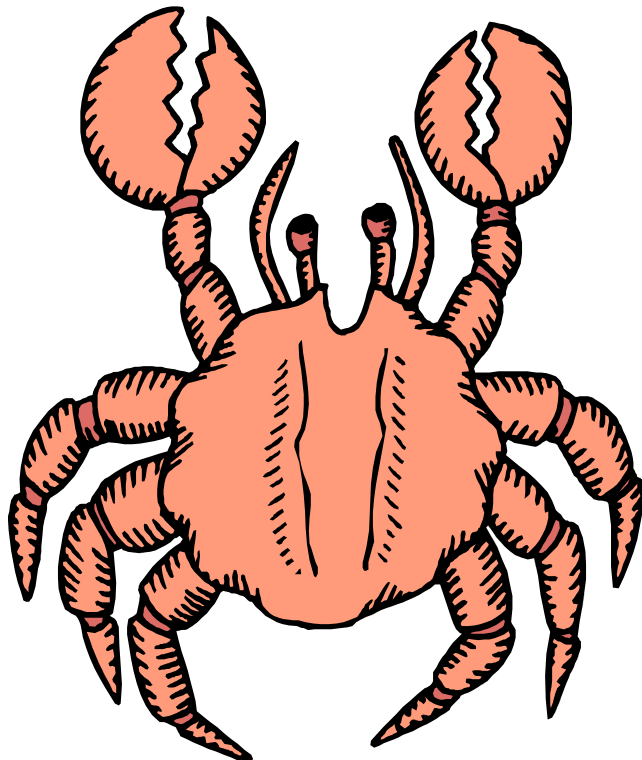
…さる

A



---

A

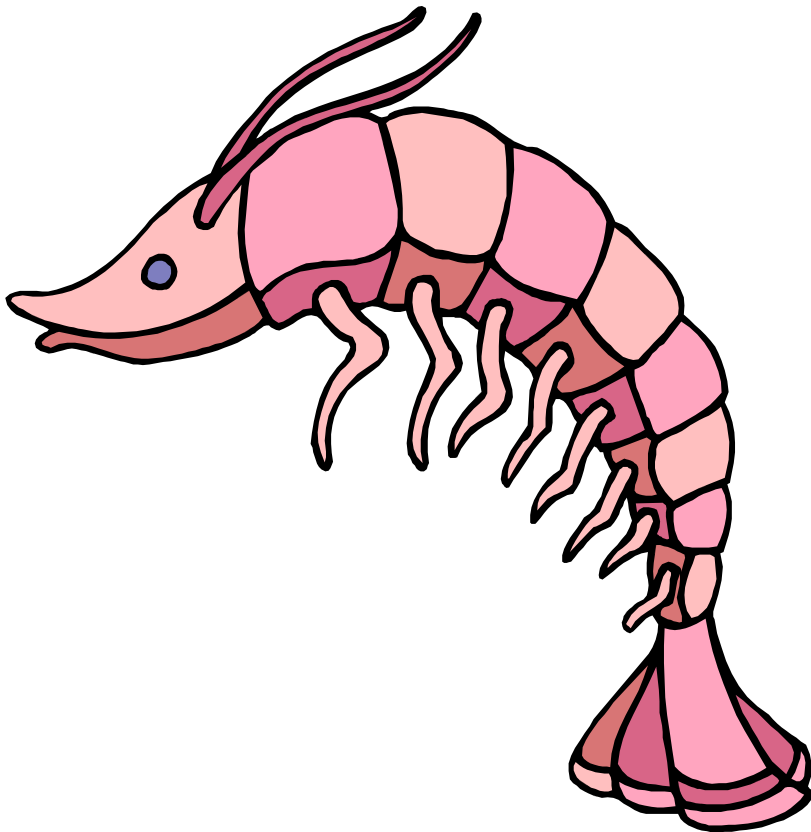


B

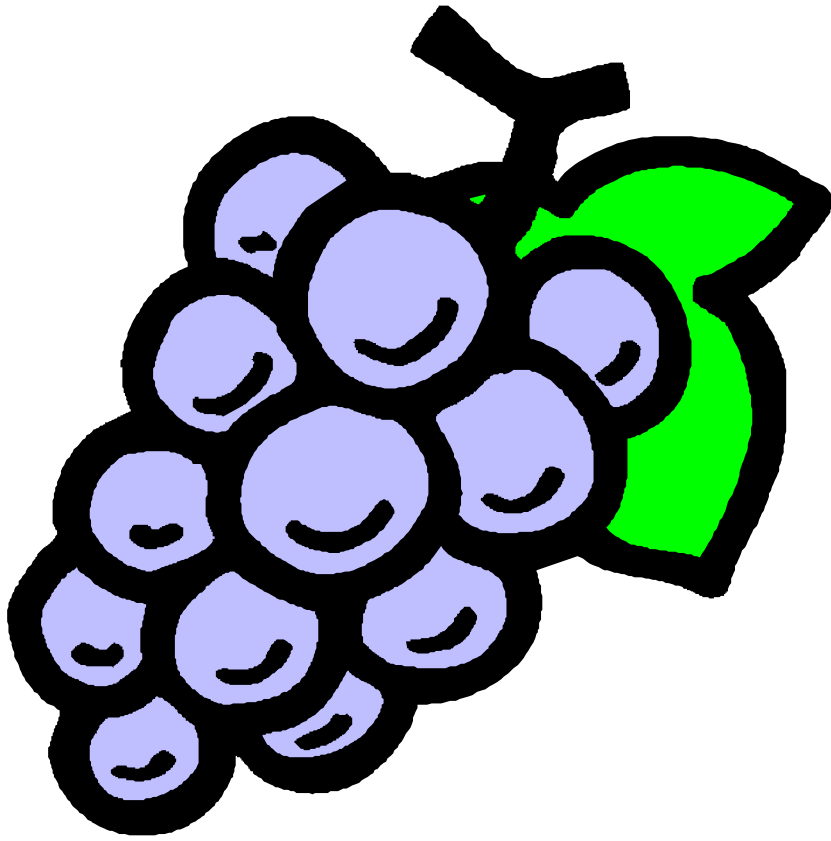


---

B

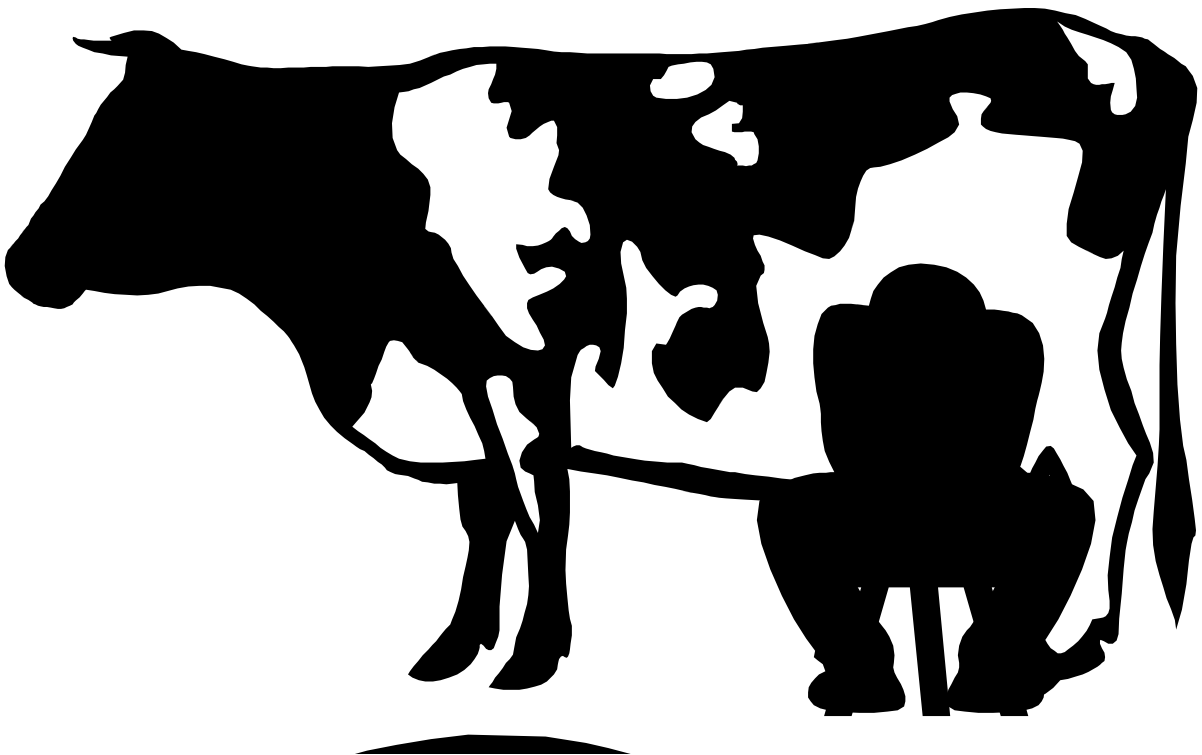


A

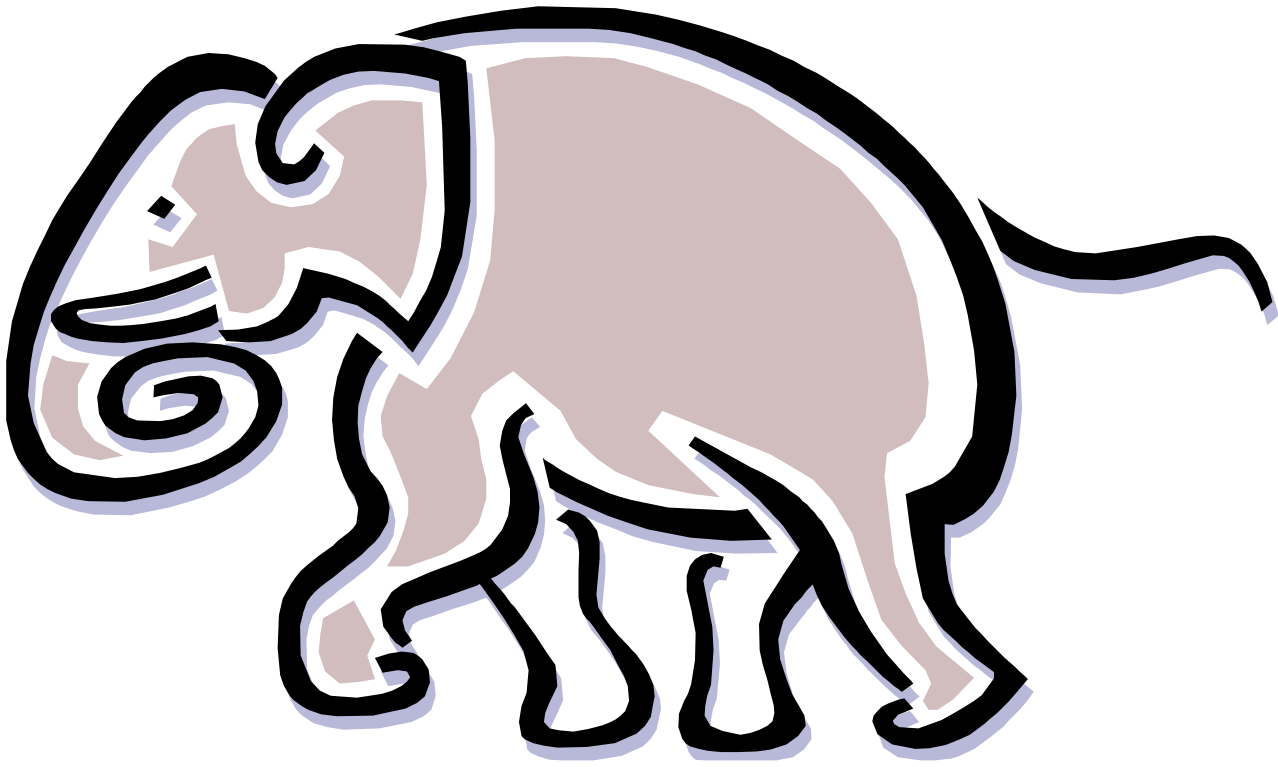


---

A

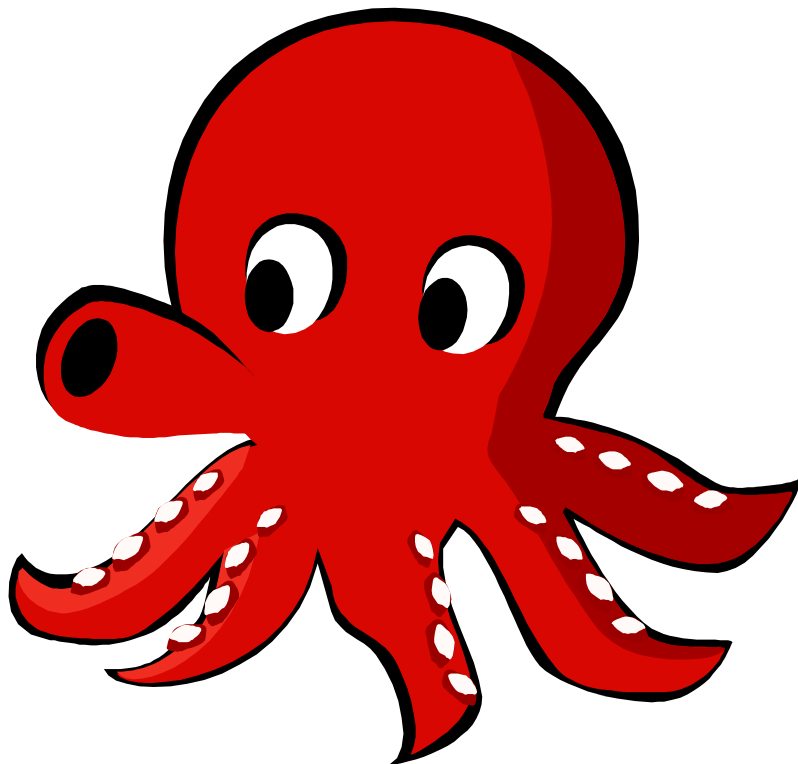


B

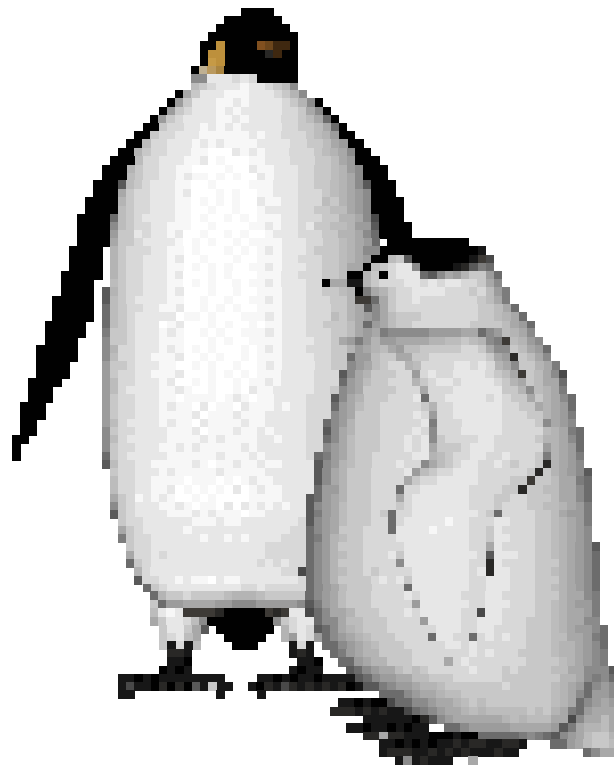


---

B

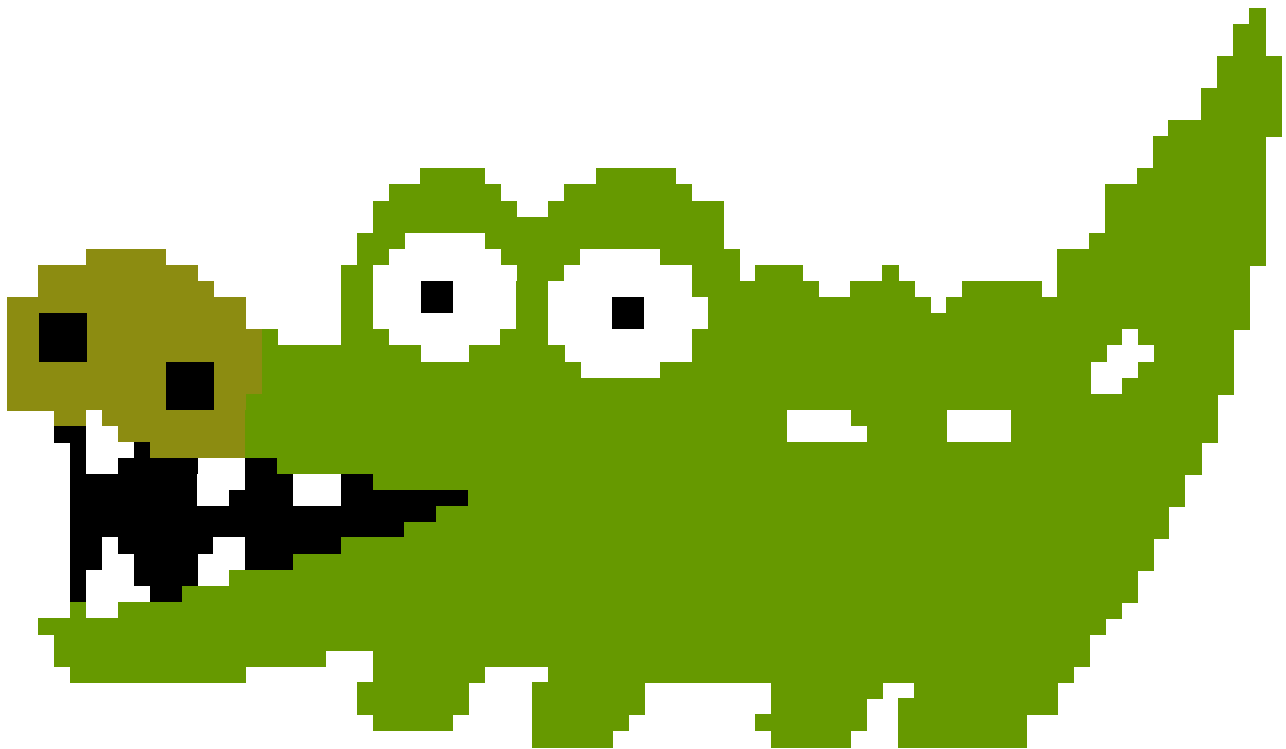


A

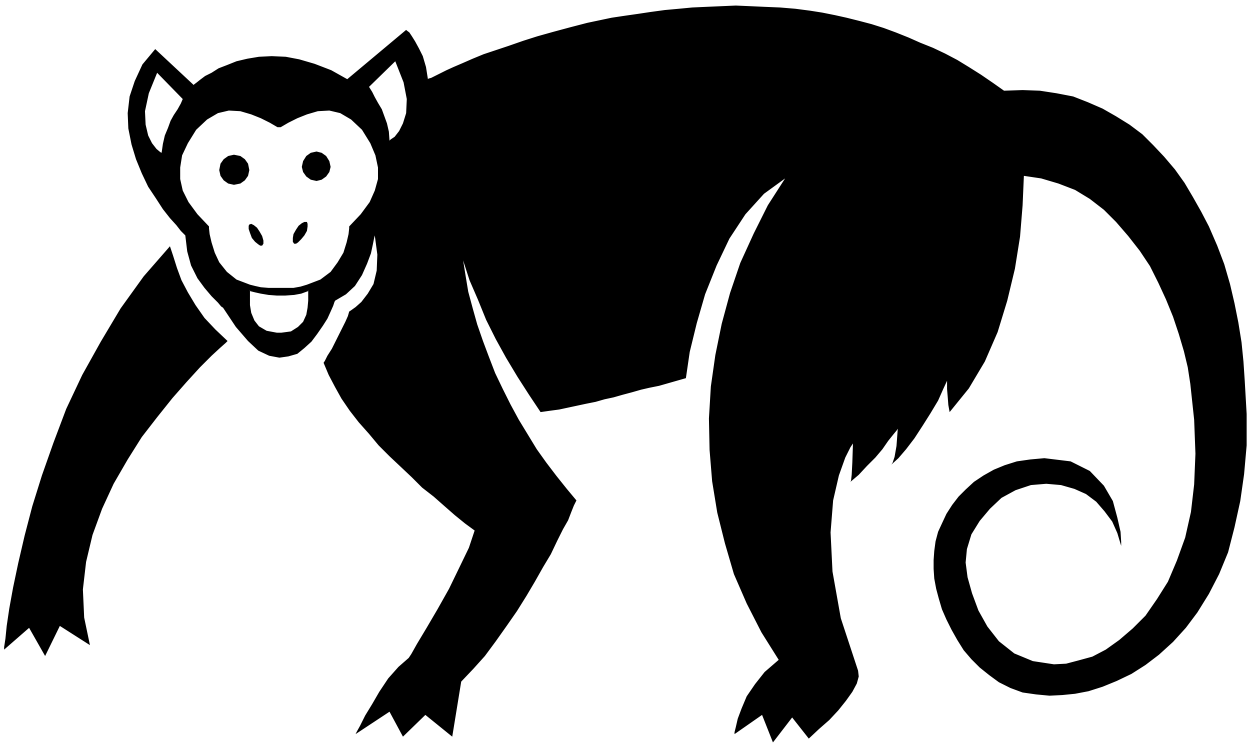


---

A



B



---

B

